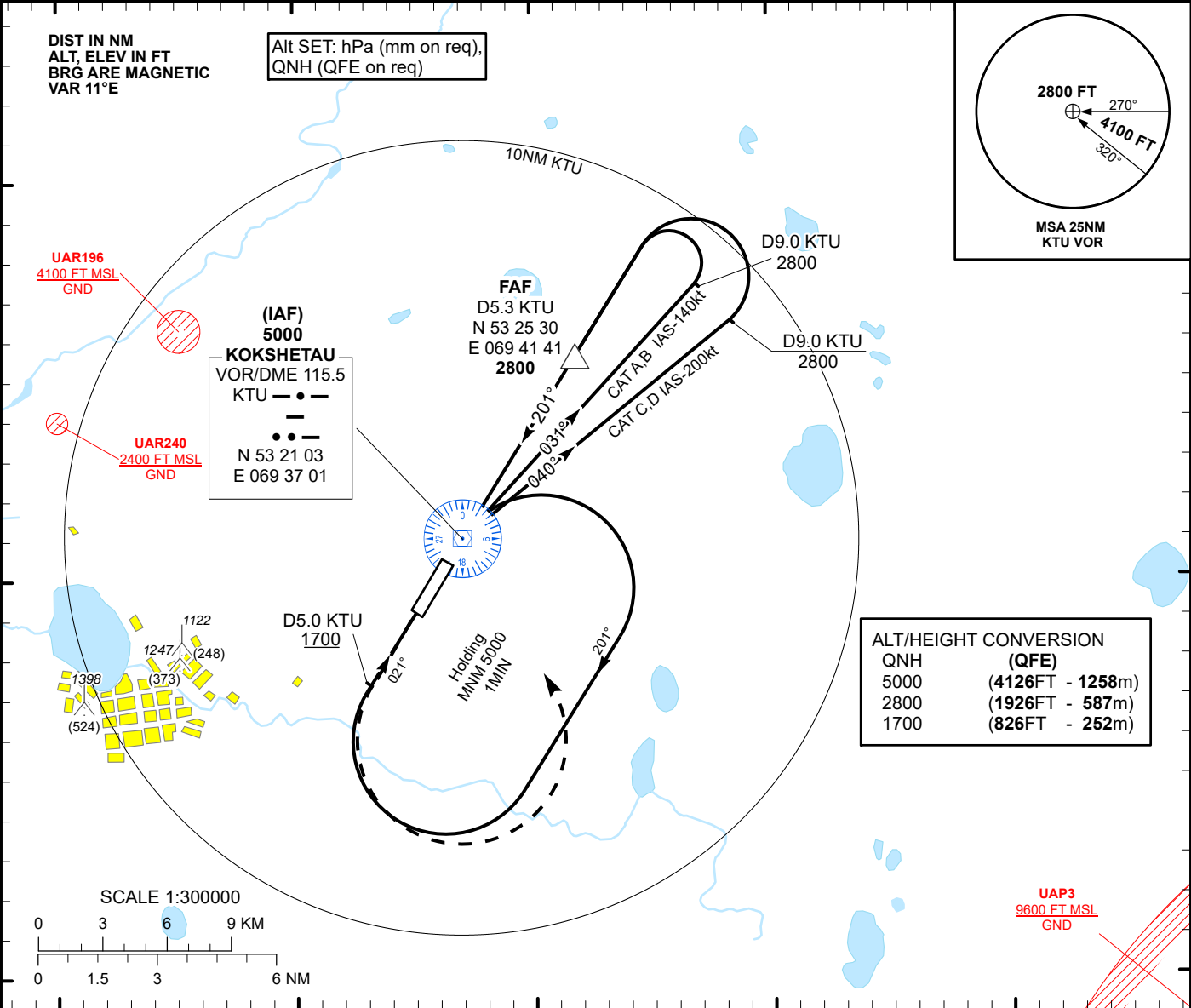


INSTRUMENT  
APPROACH  
CHART - ICAO

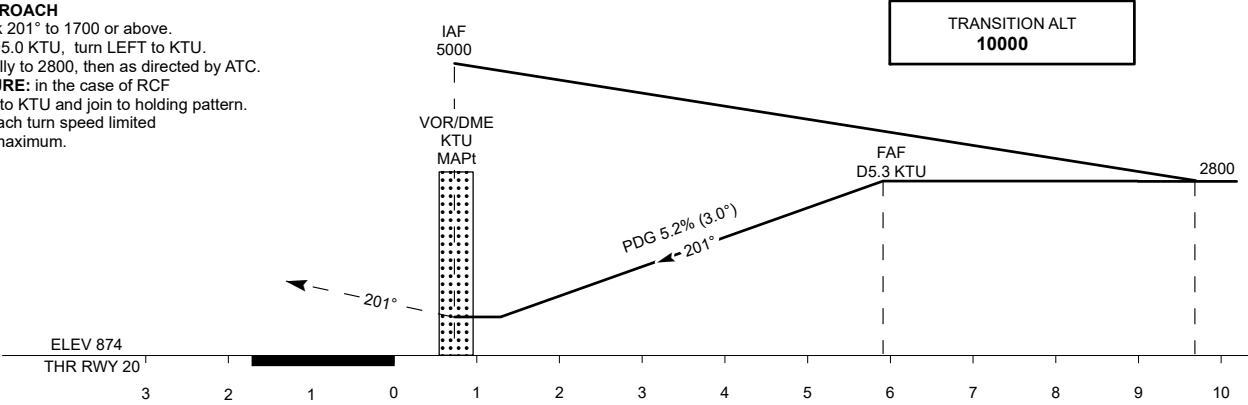
AERODROME ELEV 888 FT  
HEIGHTS RELATED TO  
THR RWY 20 ELEV 874 FT

KOKSHETAU TOWER 127.9  
KOKSHETAU ATIS (EN) 134.9  
KOKSHETAU ATIS (RU) 126.0

KOKSHETAU  
VOR/DME  
RWY 20



**MISSED APPROACH**  
Climb on track 201° to 1700 or above, outbound to D5.0 KTU, turn LEFT to KTU. Climbing initially to 2800, then as directed by ATC.  
**RADIO FAILURE:** in the case of RCF climb to 5000 to KTU and join to holding pattern. Missed approach turn speed limited to 240kt IAS maximum.



CHANGE: Add ATIS, editorial.

Aircraft Category		A	B	C	D	DME KTU	5.3	4.3	3.3	2.3	1.3	0.3	
Straight-in Approach OCA/H						DIST THR	6	5	4	3	2	1	
	VOR/DME	1170(290)	1170(290)	1170(290)	1170(290)	ALTITUDE	2800	2515	2197	1878	1560	1241	
						HEIGHT	(1926)	(1641)	(1323)	(1004)	(686)	(367)	
Aerodrome Operating Minima MDH ft x RVR(CMV)	VOR/DME												
						GS	Kt	80	100	120	140	160	180
						FAF-MAPt (5.3NM)	min:sec	3:59	3:11	2:39	2:16	1:59	1:46
						Rate of descent	ft/min	420	530	630	740	840	950

KOKSHETAU  
VOR/DME

AERONAUTICAL DATA TABULATION

VOR approach to RWY20 from KTU VOR/DME	
Fix/point	Coordinates
KTU VOR/DME(IAF)	53° 21' 02.7"N 069° 37' 01.1"E
(FAF) D5.3 KTU	53° 25' 30.2"N 069° 41' 41.0"E
THR RWY 20	53° 20' 28.22"N 069° 36' 25.39"E
Final approach descent angle is 3°	